

The Ritchie logo features the word "Ritchie" in a bold, white, cursive-style font with a thick red outline. A registered trademark symbol (®) is located to the upper right of the letter 'e'.

Ritchie[®]

***Fresh Water
For Life***[™]



PRODUCT GUIDE

The History of Ritchie Innovation

Thomas Ritchie developed the concept of the automatic waterer valve in 1921 in Oskaloosa, Iowa. He went on to design and patent the first automatic waterer and just like that, a business was born.

From that day forward automatic waterers have been our passion at Ritchie Industries. From initial design to end product, we take pride in being on the cutting edge of watering innovation.

Since Thomas Ritchie's first valve more than 100 years ago, we have expanded our product line to accommodate every type and number of animals from an individual horse to 500 cattle. Our waterers can be found all over the world, and we can point with pride to an unmatched reputation for quality and integrity.

Animal health is important to us, and animals are healthiest when they have access to clean water. That is why we have made it our mission to provide *Fresh Water For Life*.





10 Reasons Why	4
Sustainability	6
OmniFount	8
EcoFount	11
Thrifty King	12
WaterMatic	14
WaterMaster	16
Genesis	20
CattleMaster	22
OmniMaster 8	24
StallFount	25
Classic Equine by Ritchie	26
Installation Guide	30
Accessories	32
120V Specifications	34
Distributors	35

Species Key



Exotics Cattle Dog Goat Horse Sheep

Each product description displays icon(s) to identify the species the water fount is made to service.

10 reasons to buy a Ritchie

Fresh water

Automatic waterers ensure your animals have access to the right amount of clean, fresh water to keep them healthy, while saving you time and energy costs. Trough and valve combinations are sized to provide as much water as your animals want while limiting the amount of water that sits stagnant when they are not drinking. Ritchie's high flow valves are available in two sizes, depending on the size of the fountain's trough. Valves are available in different flow capacities to accommodate different supply line pressures.

Sealed polyethylene units

Our heavy-duty, impact resistant, polyethylene fountains are totally sealed so moisture can't get to the insulation. Our poly is thicker than the competition. In addition, the heavy wall, roto-molded one piece construction employs UV inhibitors for extended life.

Nothing less than 304 stainless

There are cheaper grades of stainless steel out there, but you won't find them in Ritchie fountains. Our steel troughs are made of 304 stainless — the ultimate in durability and corrosion resistance.

Animal safety

All of Ritchie's stainless steel troughs have hemmed edges to make them smooth and blunt. Our heavy-duty poly fountains have smooth, curved surfaces. All heated stainless steel troughs are tested to meet applicable standards in the United States and Canada.

Grade A dairy recommendations

You don't have to search the entire Ritchie product line for a fountain that meets Grade A dairy recommendations — they all do!



Smart design

Our water seal design eliminates the need for gaskets that can freeze, crack and tear. No one else uses this superior sealing technology to keep cold air away from the valve, which is the heart and soul of any fountain. By protecting our high capacity valves, we're protecting your investment

The best warranty in the industry

We provide a superior fountain, so we offer a superior 10-year limited warranty program on all of our poly products: five years full, followed by five years prorated. Steel products carry a 10 year, 100% warranty on stainless troughs against manufacturing defects and corrosion. None of our competitors offer a warranty this strong.*

Heavy-duty, but not heavy

Compare a Ritchie fountain with the concrete water unit offered by the competition. Our troughs don't pit, they're easy to clean, they're economical to heat and they don't compromise the cleanliness of the water. Two people can install a Ritchie fountain, but you'll need heavy equipment to install a concrete unit. Ritchie fountains use 75% less energy than concrete.

Long life

Many farmers only buy a Ritchie fountain once every 30 years, but that's because their original Ritchie fountain has served them faithfully! Pride in workmanship is still one of the hallmarks of our business and we make it easy on you by building fountains you can rely on, day in and day out. Once you find the right fountain for your operation, you'll understand why Ritchie products inspire the kind of loyalty that lasts for years.

Minimal energy costs

Designed with efficient energy use in mind, Ritchie fountains keep from freezing without much cost. The chart on page 7 represents an entire year's energy costs, calculated at a rate of 16 cents per kilowatt hour. They are derived from university and Ritchie testing and have been adjusted by the degree days for each area. This illustrates the impact that poly construction has on energy usage, as well as the effect covered troughs have on energy efficiency.

*Excludes Genesis line (1 year warranty)



The Ritchie Ripple Effect

Every Saved Drop Matters



Sustainability

The benefits of adding a Ritchie to your operation extend far beyond saving you time, money, and water. By choosing Ritchie, you'll conserve water, protect the land, and reduce energy to promote a healthier environment for generations to come. Learn how a more sustainable future starts with a drop of water.

Conserve Your Water

Water is the most valuable, most essential resource for you and your animals. Scarcity is a threat that can be mitigated through conservation.

Protect Your Land

Your animals depend on the food and water available on your acreage. So, it's critical to keep the land clean, surface waters plentiful and the soil healthy, doing all you can to reduce erosion and nutritional run-off.

Use Less Energy

Many farmers and ranchers are tapping into alternative energy sources to help keep the fresh water flowing. Emphasizing energy efficiency can do more than save you money. With many rural electric co-ops offering rebates, it can pay you money.

Sustain the Future of Your Industry

Ritchie Industries is rooted in agriculture and the rural lifestyle. Employee-owned and based in Conrad, Iowa, we're committed to making an impact on a prosperous, sustainable and regenerative future – learn more at Ritchiefount.com/sustainability.

Estimated Annual Energy Cost

FOUNTAIN	WINNIPEG, MANITOBA	FARGO, NORTH DAKOTA	SIoux FALLS, SOUTH DAKOTA	CONRAD, IOWA	ST. LOUIS, MISSOURI	OKLAHOMA CITY, OKLAHOMA
EcoFount 1	\$33.84	\$31.22	\$29.30	\$27.02	\$16.74	\$13.08
EcoFount 2	\$48.56	\$44.80	\$42.06	\$38.80	\$24.04	\$18.78
StallFount II 125	\$43.50	\$40.14	\$37.66	\$34.76	\$21.52	\$16.82
WaterMatic 150 with Immersion heater	\$59.92	\$55.28	\$51.90	\$47.88	\$29.66	\$23.16
WaterMatic 300 with Immersion heater	\$99.88	\$92.14	\$86.48	\$79.80	\$49.42	\$38.62
OmniFount 2	\$88.80	\$81.94	\$76.90	\$70.94	\$43.94	\$34.32
OmniFount 5	\$107.16	\$98.88	\$92.80	\$85.62	\$53.02	\$41.42
CT2-2000 with Immersion Heater	\$29.30	\$27.04	\$25.36	\$23.40	\$14.50	\$11.32
WaterMaster 90 with Immersion Heater	\$159.80	\$147.44	\$138.38	\$127.68	\$79.08	\$61.78
CattleMaster 840	\$341.56	\$315.16	\$295.78	\$272.90	\$169.02	\$132.04

All costs are based on a rate of 16 cents per kilowatt hour. Your cost may vary. Estimates based on U.S. dollars. Visit www.ritchiefount.com for a complete list of energy ratings.

OmniFount

The OmniFount series combines the advantages of traditional stainless steel units and poly units to provide the premier livestock fountain. The stainless steel trough features heat elements that attach to the underside for frost-free service, even under the most severe winter conditions.

- Heating elements are located directly under stainless steel trough for exceptional performance
- Cable heater provides extra valve and supply line protection
- UL/CUL approved



OmniFount 1



The OmniFount 1 is single sided waterer ideally used for stalls, small pens or paddocks.

MODEL	PART #	LENGTH IN/CM	WIDTH IN/CM	OVERALL HEIGHT IN/CM	DRINKING HEIGHT IN/CM
OmniFount 1	18359	20/51	14.5/37	25/64	18/46
SHIPPING WEIGHT LBS/KG	HEAT (CF=CONSTANT FLOW)	WATTS (AMPS)	CAPACITY GAL/LITER	HERD CAPACITY	
39/18	Std Electric/ Opt No-Heat	173W (1.4A@120V)	1.5/6	20 beef 20 horses 10 dairy	

OmniFount 2



The OmniFount 2 is a double sided waterer ideally used when splitting a fence for small pens and paddocks.

MODEL	PART #	LENGTH IN/CM	WIDTH IN/CM	OVERALL HEIGHT IN/CM	DRINKING HEIGHT IN/CM
OmniFount 2	16619	28.3/72	14.5/37	25/64	18/46
SHIPPING WEIGHT LBS/KG	HEAT (CF=CONSTANT FLOW)	WATTS (AMPS)	CAPACITY GAL/LITER	HERD CAPACITY	
45/20	Std Electric/ Opt No-Heat	298W (2.5A@120V)	2.2/8	40 beef 40 horses 20 dairy	

OmniFount 3



The OmniFount 3 is best used when watering cattle when splitting a fence or stand-alone in pen.

MODEL	PART #	LENGTH IN/CM	WIDTH IN/CM	OVERALL HEIGHT IN/CM	DRINKING HEIGHT IN/CM
OmniFount 3	18270	31.5/80	22/56	33/84	26/66
SHIPPING WEIGHT LBS/KG	HEAT (CF=CONSTANT FLOW)	WATTS (AMPS)	CAPACITY GAL/LITER	HERD CAPACITY	
77/35	Std Electric/ Opt No-Heat	548W (4.6A@120V)	10/38	100 beef 100 horses 50 dairy	



OmniFount 5



The OmniFount 5 is an ideal choice for watering large herds of cattle when splitting a fence or stand-alone in feedlot.

MODEL	PART #	LENGTH IN/CM	WIDTH IN/CM	OVERALL HEIGHT IN/CM	DRINKING HEIGHT IN/CM
OmniFount 5	16533	40/102	23.5/60	33/84	26/66
SHIPPING WEIGHT LBS/KG	HEAT (CF=CONSTANT FLOW)	WATTS (AMPS)	CAPACITY GAL/LITER	HERD CAPACITY	
92/42	Std Electric/ Opt No-Heat	548W (4.6A@120V)	16/61	150 beef 150 horses 75 dairy	



OmniFount 10



The OmniFount 10 allows livestock to access water from 360° (degrees) around the waterer. It is ideal for large herds by splitting a fence or stand alone in feedlot.

MODEL	PART #	LENGTH IN/CM	WIDTH IN/CM	OVERALL HEIGHT IN/CM	DRINKING HEIGHT IN/CM
OmniFount 10	18460	40.5/103	40.5/103	32/80	26/66
SHIPPING WEIGHT LBS/KG	HEAT (CF=CONSTANT FLOW)	WATTS (AMPS)	CAPACITY GAL/LITER	HERD CAPACITY	
150/68	Std Electric/ Opt No-Heat	1048W (8.7A@120V)	28/106	275 beef 135 dairy	





Omni-2 Special



The Omni-2 Special—with a drink height of 11 inches—is designed for smaller animals. It is ideal for calves and sheep.

MODEL	PART #	LENGTH IN/CM	WIDTH IN/CM	OVERALL HEIGHT IN/CM	DRINKING HEIGHT IN/CM
Omni-2 Special	18680	28.3/72	14.5/37	18/46	11/28
SHIPPING WEIGHT LBS/KG	HEAT (CF=CONSTANT FLOW)	WATTS (AMPS)		CAPACITY GAL/LITER	HERD CAPACITY
34/15	Std Electric/ Opt No-Heat	298W (2.5A@120V)		2.2/8	100 sheep/ goats



EcoFount

The EcoFount Waterers are the most energy efficient line of Ritchie automatic waterers. The flip top cover design allows for easy cleaning and maintenance, and the fully insulated casing protects against cold temperatures.

- Floating thermal caps minimize heat loss in winter, keep water cool and reduce algae growth in summer
- Patented plastic drink well helps keep thermal cap in place
- UL/CUL approved
- Electric standard



EcoFount 1



The EcoFount 1 is a single drink waterer ideal for small pens or paddocks.

MODEL	PART #	LENGTH IN/CM	WIDTH IN/CM	OVERALL HEIGHT IN/CM	DRINKING HEIGHT IN/CM
EcoFount 1	18430	22/56	18/46	20/51	20/51
SHIPPING WEIGHT LBS/KG	HEAT (CF=CONSTANT FLOW)	WATTS (AMPS)	CAPACITY GAL/LITER	HERD CAPACITY	
41/19	Std Electric/ Opt No-Heat	173W (1.4A@120V)	3.5/13	30 beef 30 horses 15 dairy	



EcoFount 2



The EcoFount 2 is a double drink waterer ideally used when splitting a fence for small pens and paddocks.

MODEL	PART #	LENGTH IN/CM	WIDTH IN/CM	OVERALL HEIGHT IN/CM	DRINKING HEIGHT IN/CM
EcoFount 2	18440	36/91	18.5/47	20/51	20/51
SHIPPING WEIGHT LBS/KG	HEAT (CF=CONSTANT FLOW)	WATTS (AMPS)	CAPACITY GAL/LITER	HERD CAPACITY	
75/34	Std Electric/ Opt No-Heat	298W (2.5A@120V)	6.5/25	60 beef 60 horses 30 dairy	



Thrifty King

The Thrifty King insulates the water so well that you can make it through the winter supplying little to no heat. The water is completely surrounded by fully insulated polyethylene plastic. In summer, the water is cooler, and covered water protects against mosquitoes breeding, lowering the risk of spreading West Nile Virus. The closures will also prevent water evaporation during dry months.

- Elliptical closures tip easily so animals can drink without resistance
- Easy access for maintenance
- Water seal that keeps cold air away from valve
- Covers water to prevent mosquitoes breeding
- Optional electric heat, immersion heater and self regulating heat cable

*For Thrifty King energy free requirements, visit the Thrifty King series at RitchieFount.com



Thrifty King CT1-2000



The Thrifty King CT1-2000 is a single drink livestock waterer. It is ideal in small pens or hobby farms with between 10 and 30 beef cattle.

MODEL	PART #	LENGTH IN/CM	WIDTH IN/CM	OVERALL HEIGHT IN/CM	DRINKING HEIGHT IN/CM
Thrifty King CT1-2000	16271	28/71	20.3/51	25/64	19/48
SHIPPING WEIGHT LBS/KG	HEAT (CF=CONSTANT FLOW)		CAPACITY GAL/LITER	HERD CAPACITY	
61/28	Opt Imm & Self-Reg Heat Cable		11.2/42	30 beef	



Thrifty King CT2-2000



The Thrifty King CT2-2000 is a double sided livestock waterer best used for a fence line or a stand-alone application. It can supply water to as few as 10 or as many as 100 beef cattle.

MODEL	PART #	LENGTH IN/CM	WIDTH IN/CM	OVERALL HEIGHT IN/CM	DRINKING HEIGHT IN/CM
Thrifty King CT2-2000	16299	43/109	24/61	25/64	19/48
SHIPPING WEIGHT LBS/KG	HEAT (CF=CONSTANT FLOW)		CAPACITY GAL/LITER	HERD CAPACITY	
90/41	Opt Imm & Self-Reg Heat Cable		28/106	100 beef	

Thrifty King CT4-2000



The Thrifty King CT4-2000 features a total of four drinking areas. It can provide water for up to 200 beef cattle.

MODEL	PART #	LENGTH IN/CM	WIDTH IN/CM	OVERALL HEIGHT IN/CM	DRINKING HEIGHT IN/CM
Thrifty King CT4-2000	16430	43/109	35/89	25/64	19/48
SHIPPING WEIGHT LBS/KG	HEAT (CF=CONSTANT FLOW)		CAPACITY GAL/LITER	HERD CAPACITY	
123/56	Opt Imm & Self-Reg Heat Cable		45.5/172	200 beef	



Thrifty King CT6



The Thrifty King CT6 is the largest in its series. It features six drinking areas and can provide water for up to 300 beef cattle.

MODEL	PART #	LENGTH IN/CM	WIDTH IN/CM	OVERALL HEIGHT IN/CM	DRINKING HEIGHT IN/CM
Thrifty King CT6	16440	72.5/184	39/99	25/64	19/48
SHIPPING WEIGHT LBS/KG	HEAT (CF=CONSTANT FLOW)		CAPACITY GAL/LITER	HERD CAPACITY	
210/95	Opt Imm & Self-Reg Heat Cable		55/208	300 beef	



Thrifty King Summer Cover



A Summer Cover Accessory to the Thrifty King CT4 and CT6 that will allow for more drinking area while creating an environment that's easy to clean.

MODEL	PART #	LENGTH IN/CM	WIDTH IN/CM	OVERALL HEIGHT IN/CM	SHIPPING WEIGHT LBS/KG
Thrifty King Summer Cover	18090	66/91.44	16/40.64	16/40.64	20/9.07



WaterMatic

The WaterMatic series features Ritchie's drop-in cover design with the ease of finger lift service access and the insulation of the water seal. All surfaces slope to the drains for easy clean out.

- Removable side panel with access to waterline and electric service for easy maintenance
- Immersion heater and self-regulating heat cable available for freezing conditions
- Polyurethane insulation sealed inside polyethylene parts
- No gaskets to crack, tear or leak
- Ritchie's proven valve for quick refill
- One piece rugged fountain body



AVAILABLE
IN GREEN



WaterMatic 100



The WaterMatic 100 is a single sided waterer ideal for stalls, small pens or paddocks.

MODEL	PART #	LENGTH IN/CM	WIDTH IN/CM	OVERALL HEIGHT IN/CM	DRINKING HEIGHT IN/CM
WaterMatic 100	18165	24.5/62	14/36	23.5/60	18/46
SHIPPING WEIGHT LBS/KG	HEAT (CF=CONSTANT FLOW)		CAPACITY GAL/LITER	HERD CAPACITY	
38/17	Opt Imm & Self-Reg Heat Cable		2.8/11	20 beef 20 horses 50 sheep	

WaterMatic 150



The WaterMatic 150 is a double-sided trough waterer ideal for fence line applications, small pens and paddocks.

MODEL	PART #	LENGTH IN/CM	WIDTH IN/CM	OVERALL HEIGHT IN/CM	DRINKING HEIGHT IN/CM
WaterMatic 150	18166	33.5/85	14/36	23.5/60	18/46
SHIPPING WEIGHT LBS/KG	HEAT (CF=CONSTANT FLOW)		CAPACITY GAL/LITER	HERD CAPACITY	
50/23	Opt Imm & Self-Reg Heat Cable		4.2/16	40 beef/ 40 horses/ 100 sheep	



AVAILABLE
IN GREEN

WaterMatic 150S



The WaterMatic 150S is a double-sided trough designed specifically for sheep and goats.

MODEL	PART #	LENGTH IN/CM	WIDTH IN/CM	OVERALL HEIGHT IN/CM	DRINKING HEIGHT IN/CM
WaterMatic 150S	18222	33.5/85	14/36	22.5/57	13/33
SHIPPING WEIGHT LBS/KG	HEAT (CF=CONSTANT FLOW)		CAPACITY GAL/LITER	HERD CAPACITY	
41/19	Opt Imm & Self-Reg Heat Cable		4.2/16	100 sheep/goats	



WaterMatic 300



The WaterMatic 300 is designed for larger herds in mind.

MODEL	PART #	LENGTH IN/CM	WIDTH IN/CM	OVERALL HEIGHT IN/CM	DRINKING HEIGHT IN/CM
WaterMatic 300	18050	36/91	21.5/55	31/79	26/66
SHIPPING WEIGHT LBS/KG	HEAT (CF=CONSTANT FLOW)		CAPACITY GAL/LITER	HERD CAPACITY	
71/32	Opt Imm & Self-Reg Heat Cable		8.2/31	125 beef 125 horses 60 dairy	



WaterMatic 1000



The WaterMatic 1000 is designed for large herds and allows them to drink on all four sides of the waterer.

MODEL	PART #	LENGTH IN/CM	WIDTH IN/CM	OVERALL HEIGHT IN/CM	DRINKING HEIGHT IN/CM
WaterMatic 1000	18110	42/107	42/107	32/81	26/66
SHIPPING WEIGHT LBS/KG	HEAT (CF=CONSTANT FLOW)		CAPACITY GAL/LITER	HERD CAPACITY	
129/59	Opt Imm & Self-Reg Heat Cable		22/83	275 beef 135 dairy	



WaterMaster

A popular choice in feedlots, pastures and dairies, the WaterMaster Series features a heavy duty one-piece polyethylene body that holds up in rugged conditions and under the weight of cattle hooves. The WaterMaster Series, like all Ritchie waterers, meets Grade A dairy recommendations.

The trough slopes to a large drain and can be emptied, cleaned and refilled in a fraction of the time other waterers take to empty.

The WaterMaster requires 75% less energy in the winter than concrete units, and they won't pit or cause cleaning problems.

- Immersion heater and self regulating heat cable available for freezing conditions
- Fastest refill valve in the industry
- No gaskets to crack, tear or leak
- Constant flow option available on all models*
- Water seal keeps cold air away from valve
- Finger lift service cover: no tools, springs or clips

*Excludes WaterMaster 800



WaterMaster 54



The WaterMaster 54 is built with large herds of livestock in mind.

MODEL	PART #	LENGTH IN/CM	WIDTH IN/CM	OVERALL HEIGHT IN/CM	DRINKING HEIGHT IN/CM
WaterMaster 54	16542	54/137	33/84	28/71	22/56
SHIPPING WEIGHT LBS/KG	HEAT (CF=CONSTANT FLOW)		CAPACITY GAL/LITER	HERD CAPACITY	
125/57	CF Opt/Opt Imm & Self-Reg Heat Cable		18/68	200 beef 100 dairy	



WaterMaster 54D



The WaterMaster 54D features a deep trough that allows for a greater capacity than the standard 54 while still maintaining the other features of the waterer.

MODEL	PART #	LENGTH IN/CM	WIDTH IN/CM	OVERALL HEIGHT IN/CM	DRINKING HEIGHT IN/CM
WaterMaster 54D	18355	54/137	33/84	28/71	22/56
SHIPPING WEIGHT LBS/KG	HEAT (CF=CONSTANT FLOW)		CAPACITY GAL/LITER	HERD CAPACITY	
125/57	CF Opt/Opt Imm & Self-Reg Heat Cable		54/204	200 beef 100 dairy	

WaterMaster 90



The WaterMaster 90 measures at 7.5 feet long.

MODEL	PART #	LENGTH IN/CM	WIDTH IN/CM	OVERALL HEIGHT IN/CM	DRINKING HEIGHT IN/CM
WaterMaster 90	16467	90/229	33/84	28/71	22/56
SHIPPING WEIGHT LBS/KG	HEAT (CF=CONSTANT FLOW)		CAPACITY GAL/LITER	HERD CAPACITY	
182/83	CF Opt/Opt Imm & Self-Reg Heat Cable		30/114	300 beef 150 dairy	

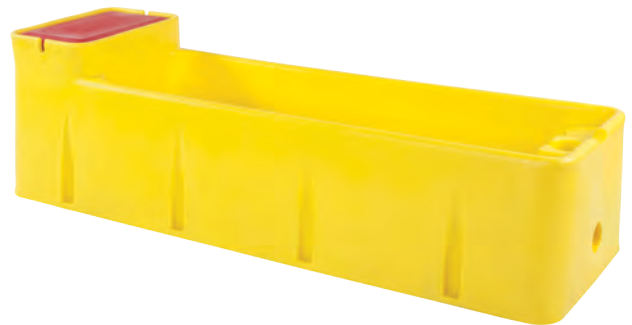


WaterMaster 96



The WaterMaster 96 provides the most water capacity in the WaterMaster series when more reserve is required for low flow applications.

MODEL	PART #	LENGTH IN/CM	WIDTH IN/CM	OVERALL HEIGHT IN/CM	DRINKING HEIGHT IN/CM
WaterMaster 96	18007	96/244	33/84	28/71	22/56
SHIPPING WEIGHT LBS/KG	HEAT (CF=CONSTANT FLOW)		CAPACITY GAL/LITER	HERD CAPACITY	
210/95	CF Opt/Opt Imm & Self-Reg Heat Cable		75/284	300 beef 150 dairy	



WaterMaster 600



The WaterMaster 600 measures 6 feet long. Featuring a narrow, deep trough, it is ideal for use in crossovers and alleyways of dairy barns.

MODEL	PART #	LENGTH IN/CM	WIDTH IN/CM	OVERALL HEIGHT IN/CM	DRINKING HEIGHT IN/CM
WaterMaster 600	18171	72/183	24/61	28.5/72	24/61
SHIPPING WEIGHT LBS/KG	HEAT (CF=CONSTANT FLOW)		CAPACITY GAL/LITER	HERD CAPACITY	
132/60	CF Opt/Opt Imm & Self-Reg Heat Cable		18/68	250 beef 125 dairy	



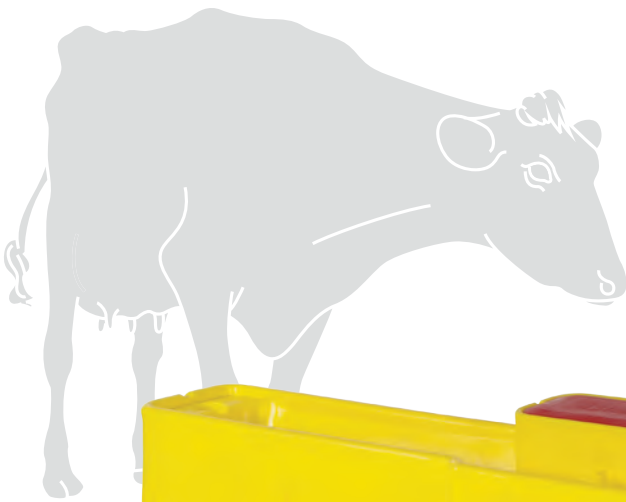


WaterMaster 800



The WaterMaster 800 features an insulated one-piece body built to withstand the weight of cows. The trough slopes to large drains and can be emptied, cleaned and refilled in a fraction of the time of other waterers. Designed to fill an entire 8 foot end wall in crossover alleys.

MODEL	PART #	LENGTH IN/CM	WIDTH IN/CM	OVERALL HEIGHT IN/CM	DRINKING HEIGHT IN/CM
WaterMaster 800	18820	96/244	24/61	27/69	24/61
SHIPPING WEIGHT LBS/KG	HEAT (CF=CONSTANT FLOW)		CAPACITY GAL/LITER	HERD CAPACITY	
150/70	Opt Imm & Self-Reg Heat Cable		52/197	360 beef 180 dairy	



WaterMaster 1200



The WaterMaster 1200 measures at 12 feet long and is the longest waterer in the WaterMaster series. Featuring a narrow trough, it is ideal for use in crossovers and alleyways of dairy barns.

MODEL	PART #	LENGTH IN/CM	WIDTH IN/CM	OVERALL HEIGHT IN/CM	DRINKING HEIGHT IN/CM
WaterMaster 1200	18053	144/366	24/61	29/72	24/61
SHIPPING WEIGHT LBS/KG	HEAT (CF=CONSTANT FLOW)		CAPACITY GAL/LITER	HERD CAPACITY	
265/120	CF Opt/Opt Imm & Self-Reg Heat Cable		60/227	500 beef 250 dairy	





Genesis

Finally, you can replace old concrete and stock tanks with an easy to install, easy to clean Ritchie automatic waterer at an affordable price.

- Same Ritchie quality at a value price
- Optional garden or washing machine hose hookup
- 1 Year Warranty

The Genesis Series of waterers combine the benefits of automatic watering with the versatility of portable or permanent mounting options. Ideal for warm weather climates or when freezing is not an issue, the construction is strong enough to last for years and the smooth surface lends itself to easy cleaning.



Genesis G1



The Genesis G1 is a single-sided waterer ideal for stalls, small pens or paddocks.

MODEL	PART #	LENGTH IN/CM	WIDTH IN/CM	OVERALL HEIGHT IN/CM	DRINKING HEIGHT IN/CM
Genesis G1	18880	23.5/59.7	22.5/57	23/58.4	18/47.5
SHIPPING WEIGHT LBS/KG	HEAT (CF=CONSTANT FLOW)	CAPACITY GAL/LITER		HERD CAPACITY	
27/12.2	Not for Use in Cold Climates	4/15		30 beef	



Genesis G2



The Genesis G2 is a double-sided trough waterer ideal for fence line applications, small pens and paddocks.

MODEL	PART #	LENGTH IN/CM	WIDTH IN/CM	OVERALL HEIGHT IN/CM	DRINKING HEIGHT IN/CM
Genesis G2	18885	36.25/92	22.5/57	23/58.4	18/47.5
SHIPPING WEIGHT LBS/KG	HEAT (CF=CONSTANT FLOW)	CAPACITY GAL/LITER		HERD CAPACITY	
36/16.4	Not for Use in Cold Climates	8/30		60 beef	



Genesis GC-2



The Genesis GC-2 is a double-sided waterer ideal for split fence applications.

MODEL	PART #	LENGTH IN/CM	WIDTH IN/CM	OVERALL HEIGHT IN/CM	DRINKING HEIGHT IN/CM
Genesis GC-2	18890	42/106.7	24/60.7	22/55.9	18/46
SHIPPING WEIGHT LBS/KG	HEAT (CF=CONSTANT FLOW)	CAPACITY GAL/LITER		HERD CAPACITY	
50/23	Not for Use in Cold Climates	28/106		100 beef	



CattleMaster

The new generation of CattleMaster fountains provides the best of both worlds: technology from traditional stainless steel units and the newest poly units. The casings of the CattleMaster Series are made from Ritchie's heavy-duty, impact resistant polyethylene construction that is tightly insulated for energy efficiency and employs UV inhibitors for extended life.

Featuring thermostatically controlled heat for ice-free operation and Ritchie's fast refill valve, CattleMaster fountains will satisfy your herd's hydration needs in any climate for extended life.

- Electric heat standard, attached directly under the trough for maximum performance
- Cable heater provides extra valve and supply line protection
- Fully adjustable thermostat
- Easy access dome cover
- Unique water seal keeps cold air away from valve



CattleMaster 480



The CattleMaster 480 has a fast refill valve and overall heat coverage. Ideal for large pastures or pens.

MODEL	PART #	LENGTH IN/CM	WIDTH IN/CM	OVERALL HEIGHT IN/CM	DRINKING HEIGHT IN/CM
CattleMaster 480	18248	51/129.5	23.5/59.7	24/61	16/41
SHIPPING WEIGHT LBS/KG	HEAT (CF=CONSTANT FLOW)	WATTS (AMPS)	CAPACITY GAL/LITER	HERD CAPACITY	
90/41	Std Electric/ Opt CF/Opt No-Heat	548W (4.6A@120V)	20/76	200 beef 100 dairy	

CattleMaster 840



The CattleMaster 840 is made from Ritchie's heavy-duty, impact resistant polyethylene construction and is heavily insulated for energy efficiency.

MODEL	PART #	LENGTH IN/CM	WIDTH IN/CM	OVERALL HEIGHT IN/CM	DRINKING HEIGHT IN/CM
CattleMaster 840	18235	86/218.4	23.5/59.7	24/61	16/41
SHIPPING WEIGHT LBS/KG	HEAT (CF=CONSTANT FLOW)	WATTS (AMPS)	CAPACITY GAL/LITER	HERD CAPACITY	
123/56	Std Electric/ Opt CF/Opt No-Heat	1048W (8.7A@120V)	35/133	300 beef 150 dairy	



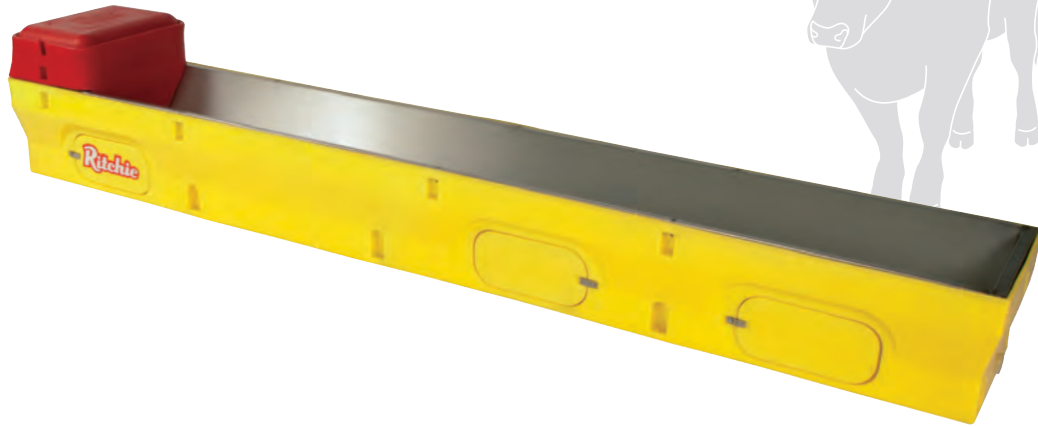
CattleMaster 1440



The CattleMaster 1440 measures 12 feet long and is ideal for large pastures or pens.

MODEL	PART #	LENGTH IN/CM	WIDTH IN/CM	OVERALL HEIGHT IN/CM	DRINKING HEIGHT IN/CM
CattleMaster 1440	18252	146/370	24/60	24/61	16/41

SHIPPING WEIGHT LBS/KG	HEAT (CF=CONSTANT FLOW)	WATTS (AMPS)	CAPACITY GAL/LITER	HERD CAPACITY
186/84	Std Electric/ Opt CF/Opt No-Heat	1298W (10.9A@120V)	60/227	475 beef/ 240 dairy



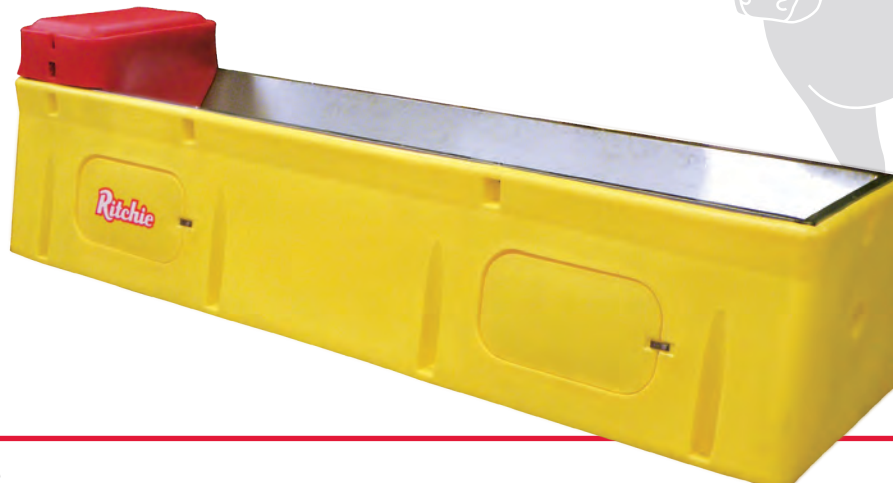
CattleMaster 10T



CattleMaster 10T features a drinking height of 25 inches, making it the tallest of the waterers in the series.

MODEL	PART #	LENGTH IN/CM	WIDTH IN/CM	OVERALL HEIGHT IN/CM	DRINKING HEIGHT IN/CM
CattleMaster 10T	18700	120/305	32/81	33/84	25/64

SHIPPING WEIGHT LBS/KG	HEAT (CF=CONSTANT FLOW)	WATTS (AMPS)	CAPACITY GAL/LITER	HERD CAPACITY
235/107	Std Electric/ Opt CF/Opt No-Heat	1048W (8.7A@120V)	50/189	400 beef 200 dairy



OmniMaster 8

The newest product in Ritchie's offerings combines the best features of the OmniFount and WaterMaster lines. The stainless steel trough is designed with a unique wraparound edge to protect against animal injury. The thermostatically controlled unit and fast refill valve will provide clean, fresh water to large herds even in the harshest weather conditions.

- Fully insulated casing for energy efficiency and durability
- Flip-top cover for easy access to valve and float
- Newly designed, high capacity drain
- Thermostatically controlled for use in all climates
- Large access panel and drain plug

MODEL	PART #	LENGTH IN/CM	WIDTH IN/CM	OVERALL HEIGHT IN/CM	DRINKING HEIGHT IN/CM
OmniMaster 8	18860	96/244	24/61	30/72.6	24/61
SHIPPING WEIGHT LBS/KG	HEAT (CF=CONSTANT FLOW)	WATTS (AMPS)		CAPACITY GAL/LITER	HERD CAPACITY
169/77	Std Electric/ Opt No-Heat	1048W (8.7A@120V)		52/197	360 beef 180 dairy



StallFount

Ritchie offers two wall-mounted fountains for your stall watering needs. Both models feature Ritchie's rapid refill valve and low maintenance stainless steel troughs. If you need freeze protection for your water, choose the StallFount 125.

- Flip top cover for easy maintenance
- Removable drain plug for cleaning



StallFount 125



The heated StallFount 125 utilizes Ritchie's rapid refill valve to deliver fresh water to your horses in their stalls. Made with smooth stainless steel edges, it is constructed for long lasting durability and functionality. It features a thermostatically controlled 125 watt trough heater supply line heat cable and adjustable insulated shroud to protect the fountain and supply line from freezing.

- Ideal for an individual stall or indoor areas in any climate

MODEL	PART #	LENGTH IN/CM	WIDTH IN/CM	OVERALL HEIGHT IN/CM	DRINKING HEIGHT IN/CM
StallFount 125	18082	14/36	13/33	Adjustable	Adjustable
SHIPPING WEIGHT LBS/KG	HEAT (CF=CONSTANT FLOW)	WATTS (AMPS)	CAPACITY GAL/LITER	HERD CAPACITY	
30/14	Std Electric	173W (1.4A@120V)	1.9/7	Single Stall	



StallFount Non-Heated



The non-heated StallFount utilizes Ritchie's rapid refill valve to deliver fresh water to your horse. Made with smooth stainless steel edges, it is constructed for long lasting durability and functionality.

- Ideal for warm climates

MODEL	PART #	LENGTH IN/CM	WIDTH IN/CM	OVERALL HEIGHT IN/CM	DRINKING HEIGHT IN/CM
StallFount	16871	14/36	13/33	10.5/27	Adjustable
SHIPPING WEIGHT LBS/KG	HEAT (CF=CONSTANT FLOW)	CAPACITY GAL/LITER	HERD CAPACITY		
14/6	N/A	1.9/7	Single Stall		



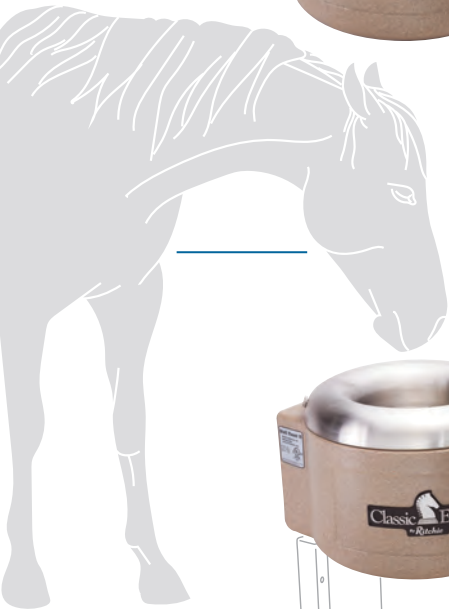
Classic Equine by Ritchie

Classic Equine Water Systems are specifically designed for equine use. They will save time spent watering horses and cleaning out troughs, all while keeping your horse fully hydrated in the harshest of climates. Well-hydrated horses stay healthier and perform better.

With Classic Equine by Ritchie you can have fresh, temperate, running water without the

hassle at a fraction of the cost. The easy to clean units provide a constant flow of fresh water, encouraging your horses to drink more and reducing the breeding ground for insects.

- Smooth edges, rounded corners and tamper resistant lids for your horse's safety
- Durable, fully insulated casing
- Quick refill valve for fresh water



StallFount Unheated



Ideal for individual stall setup or indoor area where freezing is not a concern, the StallFount provides fresh water in a space-saving corner mounted package. The quick refill function means no waiting for water and better hydration for your horse.

- Stainless steel cover and hardware that is easy to remove for cleaning and protects against chewing

MODEL	PART #	LENGTH IN/CM	WIDTH IN/CM	OVERALL HEIGHT IN/CM	DRINKING HEIGHT IN/CM
StallFount Unheated	18748	16.5/41.9	16.5/41.9	12/30.5	Adjustable
SHIPPING WEIGHT LBS/KG	HEAT (CF=CONSTANT FLOW)		CAPACITY GAL/LITER		HERD CAPACITY
20/9.1	Unheated		1/3.79		Single Stall

StallFount Heated



Ideal for individual stall setup, the StallFount provides clean water in a space-saving corner mounted package. Its quick refill function and thermostatically controlled heat means no waiting for water regardless of the temperature and better hydration for your horse.

- Stainless steel cover and hardware that is easy to remove for cleaning and protects against chewing
- Energy efficient heat protection for winter

MODEL	PART #	LENGTH IN/CM	WIDTH IN/CM	OVERALL HEIGHT IN/CM	DRINKING HEIGHT IN/CM
StallFount Heated	18740	16.5/41.9	16.5/41.9	12/30.5	Adjustable
SHIPPING WEIGHT LBS/KG	HEAT (CF=CONSTANT FLOW)	WATTS (AMPS)		CAPACITY GAL/LITER	HERD CAPACITY
22/10	Std Electric	173W (1.4A@120V)		1/3.79	Single Stall



20" StallFount Shroud



Durable, fully insulated casing designed to provide extra protection to the water line below your StallFount. Ideal for horses 15 hands and shorter.

- Six anchor bolt locations for secure installation
- Bucket rest for easy cleaning
- Lag screws sold separately
- Six anchor bolt locations for secure installation

MODEL	PART #	LENGTH IN/CM	WIDTH IN/CM	OVERALL HEIGHT IN/CM	DRINKING HEIGHT IN/CM
20" Shroud	18744	19/48.3	7/17.8	20/50.8	32
SHIPPING WEIGHT LBS/KG	HEAT (CF=CONSTANT FLOW)		CAPACITY GAL/LITER		HERD CAPACITY
9/4.08	N/A		N/A		N/A



30" StallFount Shroud



Durable, fully insulated casing designed to provide extra protection to the waterline below your StallFount. Ideal for horses 15 hands and taller.

- Eight anchor bolt locations for secure installation
- Bucket rest for easy cleaning
- Lag screws sold separately

MODEL	PART #	LENGTH IN/CM	WIDTH IN/CM	OVERALL HEIGHT IN/CM	DRINKING HEIGHT IN/CM
30" Shroud	18746	19/48.3	7/17.8	30/76.2	42
SHIPPING WEIGHT LBS/KG	HEAT (CF=CONSTANT FLOW)		CAPACITY GAL/LITER		HERD CAPACITY
14/6.4	N/A		N/A		N/A





AutoFount 1



The AutoFount 1 has a quick refill function that can provide fresh water for up to 20 head. The hinged cover allows for easy access to the fully insulated chamber.

- Accommodates immersion heater and self-regulating heat cable for cold climates, sold separately
- Heavy-duty construction
- Easy to drain and clean

MODEL	PART #	LENGTH IN/CM	WIDTH IN/CM	OVERALL HEIGHT IN/CM	DRINKING HEIGHT IN/CM
AutoFount 1	18770	20.5/52	20/51	28/71	24/61
SHIPPING WEIGHT LBS/KG	HEAT (CF=CONSTANT FLOW)			CAPACITY GAL/LITER	HERD CAPACITY
45/20	Opt Imm & Self-Reg Heat Cable			2/7.6	20 horses



UltraFount 1



The UltraFount 1 is designed to provide clean water for up to 20 head year-round regardless of climate, including in the most brutally cold winters. The insulated UltraFount 1 is energy efficient, and the stainless steel drinking area and heating system offer unbeatable longevity.

- Ideal for all weather climates
- Easy to drain and clean
- Fully insulated and features overall heat coverage
- Hinged cover for easy access to float and valve

MODEL	PART #	LENGTH IN/CM	WIDTH IN/CM	OVERALL HEIGHT IN/CM	DRINKING HEIGHT IN/CM
UltraFount 1	18780	20.5/52	20/51	29/74	24/61
SHIPPING WEIGHT LBS/KG	HEAT (CF=CONSTANT FLOW)	WATTS (AMPS)		CAPACITY GAL/LITER	HERD CAPACITY
45/20.4	Std Electric	173W (1.4A@120V)		1.5/5.7	20 horses



EZFount



The EZFount combines the benefits of automatic watering with the versatility of portable or permanent mounting options. Ideal for warm weather climates or when freezing is not an issue. The construction is strong enough to last for years and the smooth surface lends itself to easy cleaning.

- Connects to a basic 200 PSI garden or washing machine hose
- Quick and easy to install in minutes

MODEL	PART #	LENGTH IN/CM	WIDTH IN/CM	OVERALL HEIGHT IN/CM	DRINKING HEIGHT IN/CM
EZFount	18710	23/58.4	20/50.8	28.5/72.5	24/61
SHIPPING WEIGHT LBS/KG	HEAT (CF=CONSTANT FLOW)			CAPACITY GAL/LITER	HERD CAPACITY
32/145	Not for Use in Cold Climates			2.8/11	20 horses

AutoFount



The AutoFount has a quick refill function that can provide fresh water for up to 40 head. The hinged cover allows for easy access to the fully insulated chamber. It is ideal for a split pen setup.

- Accommodates immersion heater and self-regulating heat cable for cold climates, sold separately
- Heavy-duty construction
- Easy to drain and clean

MODEL	PART #	LENGTH IN/CM	WIDTH IN/CM	OVERALL HEIGHT IN/CM	DRINKING HEIGHT IN/CM
AutoFount	18720	30/76.2	20/51	28.5/72.5	24/61
SHIPPING WEIGHT LBS/KG	HEAT (CF=CONSTANT FLOW)		CAPACITY GAL/LITER	HERD CAPACITY	
50/22.7	Opt Imm & Self-Reg Heat Cable		3.2/12	40 horses	



UltraFount



The UltraFount is designed to provide clean water for up to 40 head year-round regardless of climate, including in the most brutally cold winters. The insulated UltraFount is energy efficient, and the stainless steel drinking area and heating system offer unbeatable longevity.

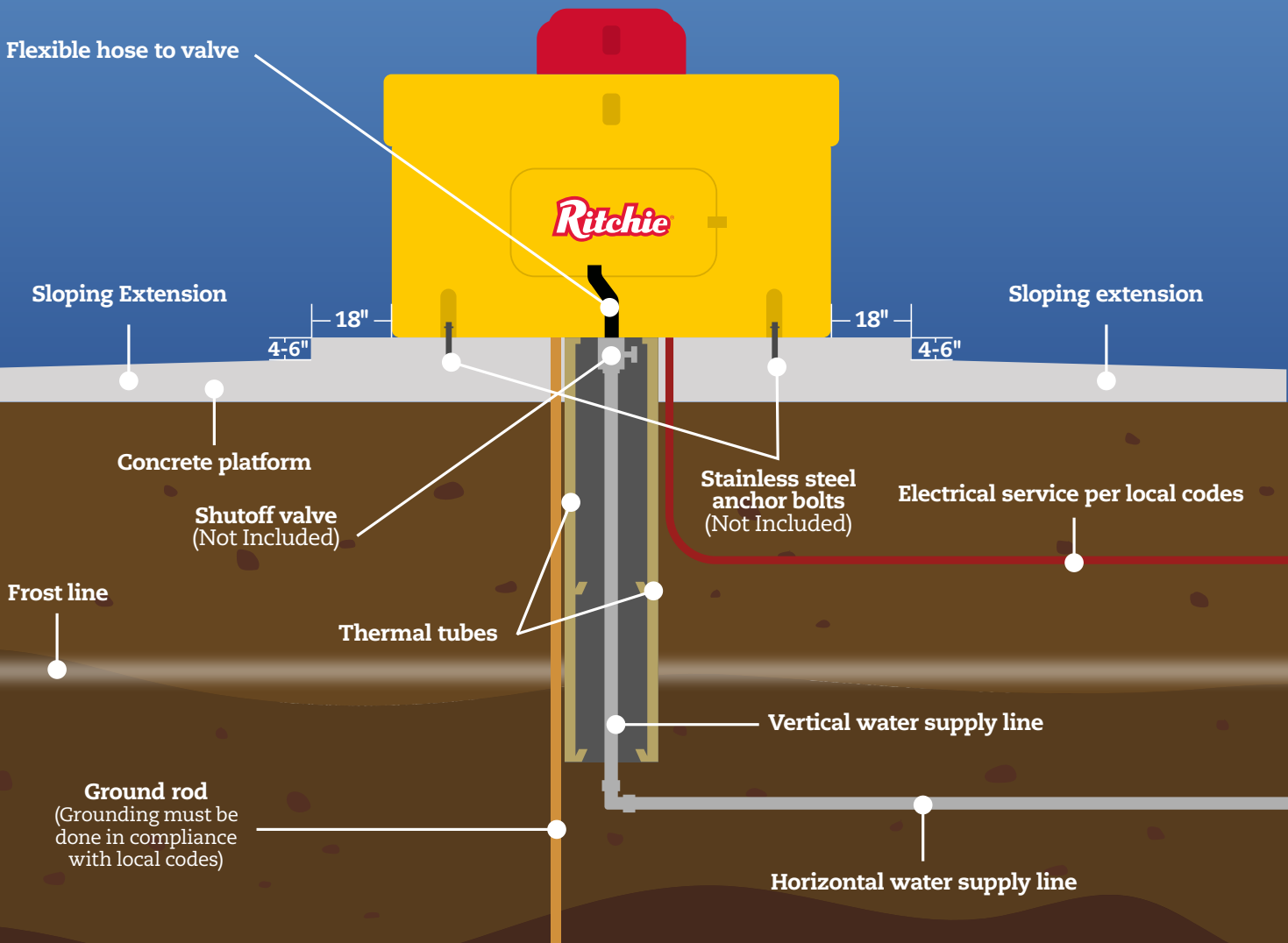
- Ideal for all weather climates
- Easy to drain and clean
- Fully insulated and features overall heat coverage
- Hinged cover for easy access to float and valve

MODEL	PART #	LENGTH IN/CM	WIDTH IN/CM	OVERALL HEIGHT IN/CM	DRINKING HEIGHT IN/CM
UltraFount	18730	30.5/77.5	20/51	29/74	24/61
SHIPPING WEIGHT LBS/KG	HEAT (CF=CONSTANT FLOW)	WATTS (AMPS)	CAPACITY GAL/LITER	HERD CAPACITY	
65/29.4	Std Electric	298W (2.5A@120V)	3.1/12	40 horses	





Installation Diagram



Water Supply Line

A minimum 3/4" diameter horizontal and vertical water supply line is necessary; a 1" diameter line is recommended. Bury the horizontal water supply line 4' deep or 1' below the normal frost line depth, whichever is deeper. This will ensure your animals are getting warmer water in the winter and cooler water during the summer. A shut-off valve may be installed under the fountain for easier servicing.

Ritchie Thermal Tubes

For optimum water supply line protection, use Ritchie Thermal Tubes. The tubes are available in three lengths and have the most favorable diameters to maintain temperature in the waterline. Center the vertical water supply line in the tubes. Do not add insulation inside the tubes as it provides a path for frost. The tubes should reach at least 4' deep or 1' below the normal frost line depth, whichever is deeper.

Electrical Connections

The electrical installation should be made and maintained by a qualified electrician conforming to national and local codes. A means for disconnection must be incorporated in the fixed wiring in accordance with the wiring rules.

Concrete Platform

Pour a concrete mounting platform that provides a 4-6" thick step 18" around the perimeter of the unit. An additional concrete extension all around and sloping away from the unit may be poured for improved footing and to aid in proper drainage. The platform must be level for the best operation of the fountain. For larger operations it is recommended to pour a concrete pad large enough for the drinking animal to stand on completely.

Anchor Locations

Fasten fountain to the concrete mounting platform with stainless steel anchor bolts (sold separately) using all anchor locations provided on the fountain. Use the actual fountain being installed as the template for anchor bolt location.

Grounding

Install grounding rod according to National/Local electrical code where livestock waterers are installed in feedlots and open feeding areas. Ground the waterers with a separate stranded copper grounding conductor of at least no.6 AWG. The installation of an equipotential plane is required by NEC in newly constructed livestock confinement areas. Most states have adopted the NEC, check with your state electrical inspector for any questions in your area.



Best warranty in the business

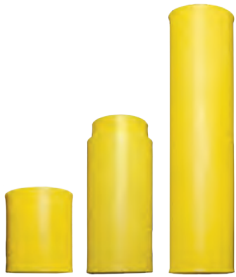
All Ritchie and Classic Equine by Ritchie fountains carry a 10-year warranty. On poly units, this is five years full warranty, with a prorated (20% per year) warranty the last five years. Steel products carry a 10 year, 100% warranty on stainless troughs against manufacturing defects and corrosion. Valves and heaters are warranted for one year from the date of purchase.*

Visit our website to learn more about the warranty:

ritchiefount.com/warranty-info

*Excludes Genesis line (1 year warranty)

Accessories



Thermal Tubes

PART #	18158	16416	16612
SIZE	1'	2' ext.	4'

- Permanently protects vertical water supply line from freezing
- Two inches of permanent insulation all around
- (12" outside diameter, 2" min. insulation)
- Tested at Iowa State University



Stock Tank Valve

PART #	18141
--------	-------

- Rapid refill rates:
 - 12 GPM @ 20 psi
 - 17 GPM @ 40 psi
 - 22 GPM @ 60 psi
- Automatically maintains stock tank water level
- High density impact resistant plastic construction
- Smooth rounded surfaces for animal safety



Immersion Heater

PART #	16311	17960	17961
WATTS	250W@120V	250W@240V	250W@240V Euro Plug

- Includes built-in thermostat
- For use in all poly units
- Teflon coating



Self-Regulating Heat Cable

PART #	16276	16713
WATTS	30W@120V	30W@240V

Ritchie Floats

#	PART #	USAGE
1	18314	3/4" float series for large units
2	18642	Classic Equine StallFount float
3	12836	1/2" w/ long arm
4	13613	1/2" w/ short arm



3/4" Valve Series

COLOR	PART#	GPM	PRESSURE
Green	15377	16.5	High, 60-80 psi
Red	11101	20	Medium, 40-60 psi
White	16697	33	Low, 5-40 psi



1/2" Valve Series

COLOR	PART#	GPM	PRESSURE
Green	13597	1.45	High, 60-80 psi
Red	12575	3.4	Medium, 40-60 psi
White	12574	4.8	Low, 5-40 psi



Drain Plugs

#	PART #	USAGE
1	14647	EcoFount units
2	18849	Thrifty King, OCC, CattleMaster, OmniMaster 8, G1 & G2 units
3	18876	StallFount 125 & No Heat units
4	18338	PRE 2019 CattleMaster units
5	18470	WaterMatic, WaterMaster, & GC2 units
6	18628	OmniFount & Pork King units
7	18643	Classic Equine StallFount units

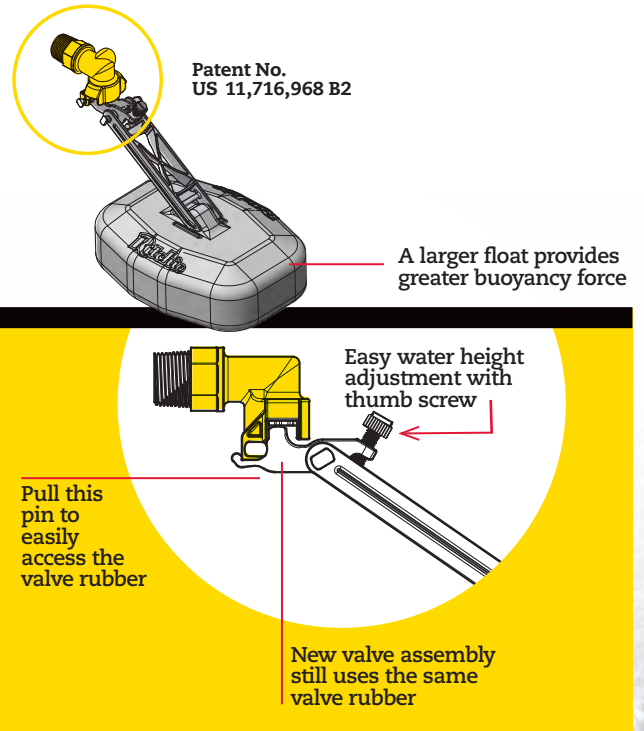


3/4" HP Valve Assembly

This valve is another example of our commitment to continually innovate and improve our products. More buoyant than prior models, our newest valve also features a higher flow rate and a thumb screw to easily adjust the water height. The new valve is designed to be an option for high pressure situations and comes standard on WaterMasters, CattleMasters and OmniMasters.

PART # 18832

- Large flat float to supply adequate buoyancy force to allow this valve to operate reliably at pressures up to 110 PSI in most applications.
- Large side discharge ports allow water to flow out of the valve with less disruption giving a higher flow rate than current valve at every pressure.
- 1/4" NPT for petcock valve. Quickly change to constant flow. Just drill out the bottom of the emboss and screw in the petcock valve.



Ritchie 120V Specifications

MODEL	PART#	LENGTH IN/CM	WIDTH IN/CM	OVERALL HT. IN/CM	DRINKING HT. IN/CM	SHIPPING. WT. LBS/KG	HEAT (CF = Constant Flow)	CAPACITY GALLON/LITER	HERD CAPACITY
ECOFOUNT									
EcoFount 1	18430	22/56	18.5/47	20/51	20/51	41/19	173W (1.4A@120V)	3.5/13	30 beef, 30 horses
EcoFount 2	18440	36/91	18/46	20/51	20/51	75/34	298W (2.5A@120V)	6.5/25	60 beef, 60 horses
OMNIFOUNT									
OmniFount 1	18359	20/51	14.5/37	25/64	18/46	39/18	173W (1.4A@120V)	1.5/6	20 beef, 20 horses
OmniFount 2	16619	28.3/72	14.5/37	25/64	18/46	45/20	298W (2.5A@120V)	2.2/8	40 beef, 40 horses
OmniFount 3	18270	31.5/80	22/56	33/84	26/66	77/35	548W (4.6A@120V)	10/38	100 beef, 50 dairy
OmniFount 5	16533	40/102	23.5/60	33/84	26/66	92/42	548W (4.6A@120V)	16/61	150 beef, 75 dairy
OmniFount 10	18460	40.5/103	40.5/103	31.5/80	26/66	150/68	1048W (8.7A@120V)	28/106	275 beef, 135 dairy
Omni-2 Special	18680	28.3/72	14.5/37	18/46	11/28	34/15	298W (2.5A@120V)	2.2/8	100 sheep or goats
WATERMATIC									
100	18165	24.5/62	14/36	23.5/60	18/46	38/17	Opt Imm & Self-Reg Heat Cbl	2.8/11	20 beef, 20 horses
150	18166	33.5/85	14/36	23.5/60	18/46	50/23	Opt Imm & Self-Reg Heat Cbl	4.2/16	40 beef, 40 horses
150S	18222	33.5/85	14/36	22.5/57	13/33	41/19	Opt Imm & Self-Reg Heat Cbl	4.2/16	100 sheep or goats
300	18050	36/91	21.5/55.6	31/79	26/66	71/32	Opt Imm & Self-Reg Heat Cbl	8.2/31	125 beef, 60 dairy
1000	18110	42/107	42/107	32/81	26/66	129/59	Opt Imm & Self-Reg Heat Cbl	22/83	275 beef, 135 dairy
WATERMASTER									
WM 54	16542	54/137	33/84	28/71	22/56	125/57	CF Std/Opt Imm & Self-Reg Heat Cbl	18/68	200 beef, 100 dairy
WM 54 Deep	18355	54/137	33/84	28/71	22/56	125/57	CF Std/Opt Imm & Self-Reg Heat Cbl	54/204	200 beef, 100 dairy
WM 90	16467	90/229	33/84	28/71	22/56	182/83	CF Std/Opt Imm & Self-Reg Heat Cbl	30/114	300 beef, 150 dairy
WM 96	18007	96/244	33/84	28/71	22/56	210/95	CF Std/Opt Imm & Self-Reg Heat Cbl	75/284	300 beef, 150 dairy
WM 600	18171	72/183	24/61	28.5/72	24/61	132/60	CF Opt/Opt Imm & Self-Reg Heat Cbl	28/106	250 beef, 125 dairy
WM 800	18820	96/244	24/61	27/69	24/61	150/70	Opt Imm & Self-Reg Heat Cbl	52/197	360 beef, 180 dairy
WM 1200	18053	144/366	24/61	29/72	24/61	265/120	CF Std/Opt Imm & Self-Reg Heat Cbl	60/227	500 beef, 250 dairy
CATTLEMASTER									
CM 480	18248	51/129.5	23.5/59.7	24/61	16/41	90/41	548W (4.6A@120V)/CF	20/76	200 beef, 100 dairy
CM 840	18235	86/218.4	23.5/59.7	24/61	16/41	123/56	1048W (8.7A@120V)/CF	35/133	300 beef, 150 dairy
CM 10T	18700	120/305	32/81	33/84	25/64	235/107	1048W (8.7A@120V)/CF	50/189	400 beef, 200 dairy
CM 1440	18252	146/370	23.5/59.7	24/61	16/41	186/84	1298W (10.9A@120V)/CF	60/227	475 beef, 240 dairy
GENESIS									
Genesis G1	18880	23.5/59.7	22.5/57	23/58.4	18/46	27/12.2	Not for use in Cold Climates	4/15	30 beef
Genesis G2	18885	36.25/92	22.5/57	23/58.4	18/46	36/16.4	Not for use in Cold Climates	8/30	60 beef
GC-2	18890	42/106.7	24/60.7	22/55.9	18/46	50/23	Not for use in Cold Climates	28/106	100 beef
OMNIMASTER									
OmniMaster 8	18860	96/244	24/61	30/76.2	24/61	169/77	1048W (8.7A@120V)	53/201	360 beef, 180 Dairy
THRIFTY KING									
CT1-2000	16271	28/71	20.3/51	25/64	19/48	61/28	Opt Imm & Self-Reg Heat Cbl	11.2/42	30 beef
CT2-2000	16299	43/109	24/61	25/64	19/48	90/41	Opt Imm & Self-Reg Heat Cbl	28/106	100 beef
CT4-2000	16430	43/109	35/89	25/64	19/48	123/56	Opt Imm & Self-Reg Heat Cbl	45.5/172	200 beef
CT6	16440	72.5/184	39/99	25/64	19/48	210/95	Opt Imm & Self-Reg Heat Cbl	55/208	300 beef
CLASSIC EQUINE BY RITCHIE									
EZ Fount	18710	23/58.4	20/50.8	28.5/72.5	24/61	32/14.5	NOT FOR USE IN COLD CLIMATES	3.8/14.3	20 horses
AutoFount 1	18770	20.5/52	20/51	28/71	24/61	45/20	Opt Imm Heater & Self-Reg Heat Cbl	2/7.6	20 horses
AutoFount	18720	30/76.2	20/51	28.5/72.5	24/61	50/22.7	Opt Imm Heater & Self-Reg Heat Cbl	3.2/12	40 horses
UltraFount 1	18780	20.5/52	20/51	29/74	24/61	45/20.4	173W (1.4A@120V)	1.5/5.7	20 horses
UltraFount	18730	30.5/77.5	20/51	29/74	24/61	65/29.4	298W (2.5A@120V)	3.1/12	40 Horses
StallFount - Unheated	18748	16.5/41.9	16.5/41.9	12/30.5	Adjustable	20/9.1	Unheated	1/3.79	Single Stall
StallFount - Heated	18740	16.5/41.9	16.5/41.9	12/30.5	Adjustable	22/10	173W (1.4A@120V)	1/3.79	Single Stall
StallFount 20" Shroud	18744	19/48.3	7/17.8	20/50.8	32/81	9/4.08	NA	NA	NA
StallFount 30" Shroud	18746	19/48.3	7/17.8	30/76.2	42/107	14/6.4	NA	NA	NA
STALLFOUNT									
StallFount	16871	14/36	13/33	10.5/27	Adjustable	14/6	NA	1.9/7	Single Stall
StallFount 125	18082	14/36	13/33	Adjustable	Adjustable	30/14	173W (1.4A@120V)	1.9/7	Single Stall
Shroud Set	18092	19.4/49 ea.	7/18	Up to 4'	Up to 4'	13/6	NA	NA	NA

Ritchie Distributors

USA

Montana, Wyoming, Colorado,
Western Oregon and Washington

2-M Company

Billings, MT 59101
800-234-7426

Bozeman, MT 59718
866-556-8385

Missoula, MT 59808
800-326-6795

Kalispell, MT 59901
866-610-5961

Aurora, CO 80011
303-320-4631

Moses Lake, WA 98837
509-765-0867

Texas and New Mexico

Becker Wholesale

Slaton, TX 79364
806-828-5881
beckerwholesale@gmail.com

Kansas and Northern Oklahoma

Boettcher Supply, Inc.

Beloit, KS 67420
800-657-5770
info@boettchersupply.com

Minnesota and Iowa

Carlson Wholesale, Inc.

Sauk Rapids, MN 56379
800-669-4038
Rochester MN
877-700-2694

Kentucky, Southern Indiana,
and Southern Ohio

Central Farm Supply

Louisville, KY 40219
800-777-5923
pkuntzman@centralfarmky.com

Tennessee

Faithway Alliance, LLC.

La Vergne, TN 37086-1983
800-366-2667
dalton.hughes@faithwayalliance.com

Wisconsin and Illinois

Ferguson Enterprises

Wisconsin Rapids, WI 54495
715-421-5300
ritchie.sales@ferguson.com

Southwest Illinois

ILL-MO Pump & Supply

East St. Louis, IL 62202
618-271-3462
illmopump@att.net

Mississippi, Georgia, Arkansas, Alabama,
Louisiana, Florida, East Texas and
Southern Oklahoma

K&K Veterinary Supply

Tontitown, AR 72770
800-345-5838

North Carolina, South Carolina,
West Virginia and Virginia

May Supply, Inc.

Harrisonburg, VA 22801
540-433-2611
sales@maysupply.com

Utah, Nevada, Arizona and Idaho

Mountainland Supply

Orem, UT 84058
801-689-0990
Ritchie@mc.supply

Nebraska

Nebraska Pump

Lincoln, NE 68504-1553
402-466-1477
sales@nebraskapump.com

Alaska, California and Hawaii

Ritchie Industries, Inc.

Conrad, IA 50621
800-747-0222

Delaware, New England, Maryland,
New Jersey, New York and Pennsylvania

Ryder Supply Company

Chambersburg, PA 17202
888-464-6379
info@rydersupply.com

Western Minnesota, North Dakota,
South Dakota and Northwest Iowa

V&M Co., Inc.

Sioux Falls, SD 57104
800-648-6507
orders@vandminc.com

Michigan, Northern Indiana and
Northern Ohio

Valley Farms Supply, Inc.

Lansing, MI 48906
517-703-0400
800-227-8677

Missouri

Zeitlow Distributing

Boonville, MO 65233
800-530-5158
mosales@zeitlow.com

INTERNATIONAL DISTRIBUTORS

Belarus

Travira Nova, LLC

Minsk Region
375-44-556-8695
info@travira.by

Teko Agro Ltd.

Minsk Region, Kolyadichi
375-17-510-2237
info@tekoagro.by

Estonia

Dairy Tec Ou

Saku Tehnika Street 5 75501
372-604-1730
dairytec@dairytec.eu

Germany

Arntjen Germany Gmbh

An Der Brucke 33-35
D-26180 Rastede Germany
49-4402-92400
info@arntjen.com

Holland

Royal De Boer Stalinrichtingen B.V.

Leeuwarden, Nederland
31-0-58-284-3334
Fax: 31-0-58-284-3302
sales@royaldeboer.com

Japan

Toho Boeki K.K.

Meguro-Ku, Tokyo, Japan
81-3-3723-7181
import@tohoboeki.com

Kazakhstan

Empire Group Corporation

Almaty 050063
7-272-313-1747
a-javidan@egc.kz

Russia

GEA Farm Technologies Rus LLC

Otradnaya str. 2B bld.9, floor 10,
room 98, 127273 Moscow,
Russian Federation
7-495-787-2020
dmitry.tarasov@gea.com
nikita.butuchan@gea.com

ASC LLC

Moscow Region, Oktyabrskaya 28A
7-496-575-9464
kae@ascg.ru

CANADA

Alberta and British Columbia

Ability Pump and Equipment

Calgary, AB, Canada T2B 3N2
403-273-6414
sales@abilitypump.com

Manitoba and Saskatchewan

Triple M Sales, Ltd.

1767 Hekla Avenue
Winnipeg, Manitoba R2R 0K3
800-392-1341
triplem@mts.net

Ontario, Quebec and Maritime Provinces

Jad-Vent Distributors Ltd. a Div. of Davon Sales Inc.

Woodstock, ON, Canada N4T 1E5
519-537-2375
doris@davonsales.com

Ritchie[®]

**Fresh Water
For Life**[™]



120 S Main. P.O. Box 730
Conrad, Iowa 50621 | 800.747.0222

RitchieFount.com

Part# 11653 © 2024 Ritchie Industries