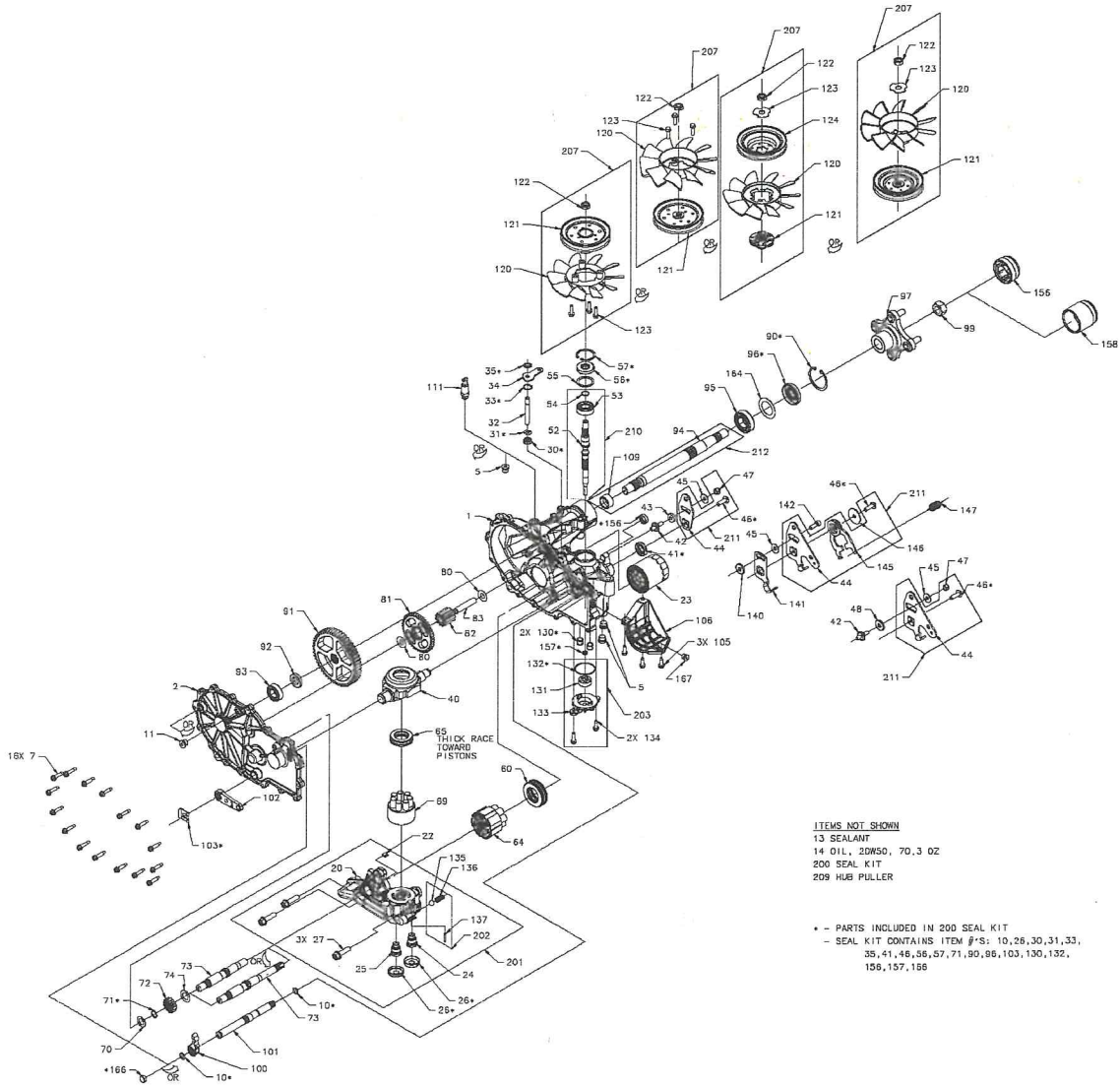


D-3788-01



ITEMS NOT SHOWN
13 SEALANT
14 OIL, 2DWSO, 70.3 OZ
200 SEAL KIT
209 HUB PULLER

* - PARTS INCLUDED IN 200 SEAL KIT
- SEAL KIT CONTAINS ITEM #'S: 10, 26, 30, 31, 33,
35, 41, 46, 36, 57, 71, 90, 86, 103, 130, 132,
156, 157, 158

D-3788-01

Ref #	Part Number	Qty	Description
1	71413	1	KIT, HOUSING, MAIN, RH, CHRG, CNTL
2	71572	1	KIT, COVER, SIDE, RH
4	9005200-5600	1	PLUG 9/16-18 (PLASTIC)
7	53246	16	HFHCS 1/4-20 X 1.125"
10	51804	2	O-RING - 111 .103 X .424
11	9005110-5600	1	PLUG 9/16-18 (METAL)
13	50928	1	SEALANT
14		70.3OZ	OIL, 20W50
22	51448	1	PLATE, BYPASS
23	52114	1	FILTER, OIL
26	52162	2	SEAL, PLUG 1.250 X .250
27	52137	3	HFHCS 3/8-16X1.5 (PATCH)
30	51626	1	SEAL, LIP .375X.75X.25
31	51628	1	RING, RET .375 EXTRNL
32	52136	1	ROD, BYPASS
33	51627	1	RING, RET .750 INTRNL
34	51910	1	ARM, BYPASS
35	51630	1	RING, RTNG .375 EXT
40	51048	1	TRUNNION, SWASHPLATE
41	51140	1	SEAL, LIP 12 X 32 X 7
42	50426	1	STUD, SHORT 5/16-24
45	44130	1	WASHER .34X.88X.06
46	51812	1	TWHCS 5/16-24 X 1.00 (PATCH)
47	50317	1	NUT, HEX LOCK 5/16-24 UNF
48	51846	1	SPACER
55	50951	1	WASHER 1.23X1.56X.04
56	51161	1	SEAL, LIP 17X40X7
57	50329	1	RING, RETAINING
60	51462	1	BEARING, THRUST
64	71579	1	ASS'Y, CYLINDER BLOCK, 16cc
65	50551	1	BRG, THRUST BALL 30X52X13
69	70723	1	ASS'Y, BLOCK 7 PISTON
70	44371	1	WASHER .63X1.0X.05
71	44145	1	RING, RETAINING_ .625
72	52341	1	GEAR, 14T, STEEL
73	52150	1	SHAFT, MOTOR
74	51069	1	WASHER .72X1.16X.04
80	50132	2	WASHER .5X1.0X.03
81	52110	1	GEAR, 45T
82	52586	1	GEAR, 11T, STEEL
83	51083	1	JACK SHAFT (PIN)
90	50859	1	RING, RET 2.06 INT
91	52108	1	GEAR, 54T
92	53336	1	SPACER, .75 X 1.32 X .257
93	44121	1	BEARING, BALL, .75 X 40 X 12
95	53656	1	BRG, BALL 1.0X52X15 OPEN 6205M
96	53699	1	SEAL, LIP TC4, 1.0 X 2.06 X .38
97	71446	1	KIT, HUB, 4 BOLT
99	53768	1	NUT, HEX LOCK 3/4-16
100	52766	1	PAWL, BRAKE
101	72046	1	KIT, BRAKE SHAFT
102	52639	1	HANDLE, ACTUATING
103	52027	1	CLIP, RETAINING
105	50752	3	HFHCS 1/4-20 X .75
106	53655	1	GUARD, FILTER, RH
120	53050	1	FAN 7", 10 BLADE
121	52364	1	DISC, PULLEY
122	44133	1	NUT, HEX JAM 1/2-20 W/PATCH
123	51523	1	WASHER, OD SLOTTED .53X1.63X.0
124	52366	1	HUB

D-3388-01

Ref #	Part Number	Qty	Description
124	52366	1	HUB
130	52157	2	TUBE, CONNECTING
131	50273	1	GEROTOR ASSEMBLY (1.9 cc/rev)
132	52250	1	O-RING, -137, 0.103 X 2.050
133	52688	1	COVER, CHARGE PUMP
134	50752	2	HFHCS 1/4-20 X .75
157	53456	1	SEAL, LIP 8 X 12 X 3 VC
158	53501	1	CAP, AXLE
164	53514	1	SPACER
200	71410	1	KIT, SEAL
201	71561	1	KIT, CENTER SECTION, RH, CHR
202	71436	1	KIT, CHARGE RELIEF
203	71411	1	KIT, CHARGE PUMP
207	71721	1	KIT, FAN & PULLEY
209	71459	1	HUB PULLER, 4 BOLT
210	71442	1	KIT, INPUT SHAFT
211	71634	1	ARM, CONTROL RH
212	71570	1	KIT, SHAFT, AXLE
5			Reference number not used on this model
43			Reference number not used on this model
52			Reference number not used on this model
53			Reference number not used on this model
54			Reference number not used on this model
104			Reference number not used on this model
111			Reference number not used on this model
119			Reference number not used on this model
140			Reference number not used on this model
141			Reference number not used on this model
142			Reference number not used on this model
146			Reference number not used on this model
147			Reference number not used on this model
156			Reference number not used on this model
159			Reference number not used on this model
165			Reference number not used on this model
166			Reference number not used on this model
167			Reference number not used on this model
168			Reference number not used on this model
171			Reference number not used on this model
208			Reference number not used on this model